

House Calls

By KATHLEEN HOM

Homeowner

Charlotte Pappas

Neighborhood

Hyattsville

Problem

Pappas says a 27-by-10-foot former driveway and carport gradually morphed into the family's main dining area and a place to showcase her collection of tea and coffee cups on hooks near the ceiling. "The room served us well for years," Pappas writes, "however it is no longer needed to serve 35 people for a sit-down meal." She'd like more lighting, suggestions for the walls, some of which are brick and some wood paneling, and ideas about flooring alternatives to warm up the space.

Designer

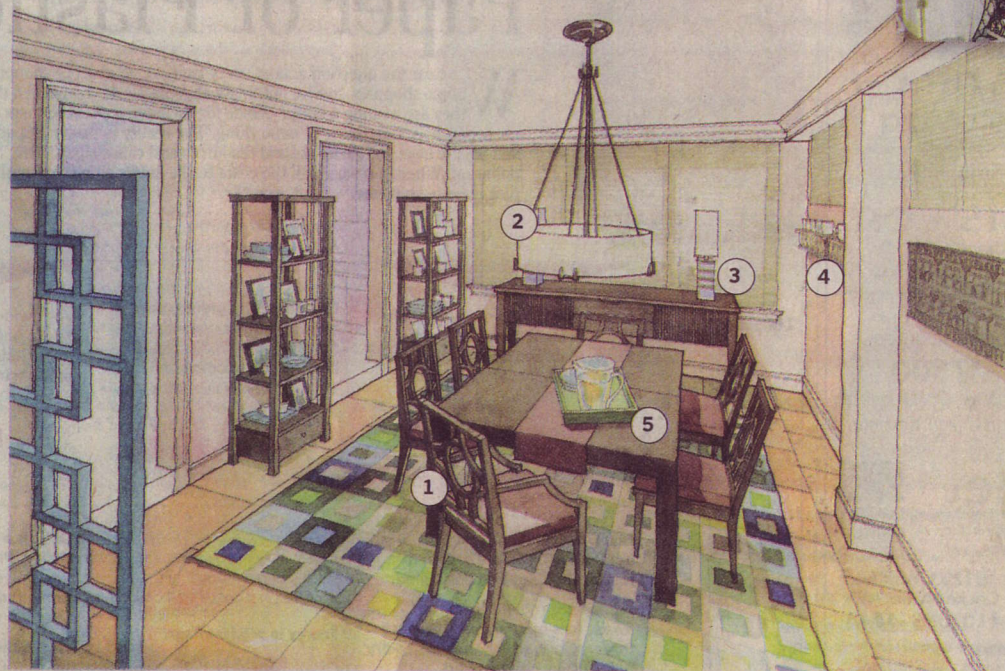
Carol Freedman of Carol Freedman Design in Bethesda. carol@carolfreedmandesign.com.

Suggestions

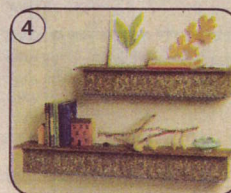
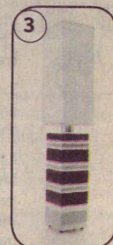
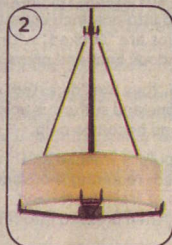
Seemingly old-fashioned architectural elements, such as the geometric room dividers, can take on new life when refinished and can even inspire other design elements and furnishings in the room. Consider using a bright area rug on top of natural cork floors for warmth and comfort. Install drywall on all walls for consistency.

GET A CLOSER LOOK See other recommendations for this room in a photo gallery at washingtonpost.com/housecalls.

Paint: Elmira White for the walls and trim, China White for the ceiling and Ash Blue for the room dividers. All colors from Benjamin Moore.

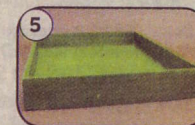


Echo the existing room dividers with a geometric dining set, anchored by a colorful geometric rug. Parsons Expandable Dining Table (\$499) pairs with Circle Cutout armchairs (\$429 for two) and side chairs (\$679 for four). Add cushions for armchairs (\$69 for two) and side chairs (\$109 for four). All in chocolate from West Elm (www.westelm.com). Square in Square rug in ocean from Liora Manne's Amalfi collection, available at Rugs Direct (www.rugs-direct.com), \$399.50 for 7 feet 10 inches by 9 feet 10 inches).



Brighten the room with light fixtures. Urban Oasis Pendant, available at Lighting Universe (www.lightinguniverse.com), \$238. Mack Daddy table lamps in blue and wenge wood at Inhabit (www.inhabiting.com), \$232 each).

Open etageres and wall-mounted shelving can showcase collections. Logan Etagerie by Mitchell Gold + Bob Williams (www.mgandbw.com), \$795 each). Elegant Display Mantels, large (\$139) and small (\$99), available at Wisteria (www.wisteria.com).



Add color with serving pieces and texture with wall art. Ocean Blue dinnerware, available at Go Mama Go (www.gomamago.com), \$4.50 to \$40 per piece). Green Bamboo Tray from Jamali Garden Supplies (www.jamaligarden.com), \$16). Festival of Life Folk-Art Panel from Wisteria (www.wisteria.com), \$329).



BEFORE



Hang tailored window blinds as close to the ceiling as possible to make windows appear taller. Provenance woven wood shades in Enchant and Taupe Temptation from Hunter Douglas (www.hunterdouglas.com), priced according to size).

Replace the existing storage cabinets with a single strong piece. Cyprus 80w storage cabinet in ebony from Room & Board (www.roomandboard.com), \$1,399).